

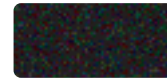
Credenza & High Back Organizer

Finishes & Accessories

Available Finishes



Textured White
WH120



Textured Black
BK59



Gloss Black
BK266



Mauve
RAL4009



Rose
RAL3015



Rust
RAL8023



Gloss White
WH11



Pastel Green
RAL 6019



Fern
RAL6025



Pastel Blue
RAL 5024



Salmon Orange
Ral 2012



Pearl White
RAL1013



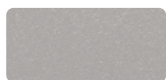
Turquoise
RAL6027



Beige Gray
RAL1019



Melon
RAL1028



Satin Nickel
HM512514



Burgundy
HS212R7



Navy
HS212B518



Sage
RAL6021



Golden Hour
RAL1018



Silver Gray
RAL7001



Violet
RAL4008

Credenza & High Back Organizer

Finishes & Accessories

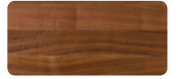
Available Surface Options



Hardwood
Maple



Hardwood
Oak



Hardwood
Walnut



Laminate
5th Avenue Elm



Laminate
Astro Strandz



Laminate
Battleship



Laminate
Beige



Laminate
Bellini Blue



Laminate
Black



Laminate
Regimental Red



Laminate
Slate Grey



Laminate
Sprout



Laminate
Buka Bark



Laminate
Calcutta Marble



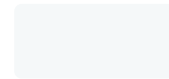
Laminate
Carbon Mesh



Laminate
Cement



Laminate
Charcoal Velvet



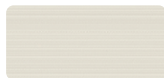
Laminate
Designer White



Laminate
Florence Walnut



Laminate
Fusion Maple



Laminate
High Rise



Laminate
Island



Laminate
Lace Gesso Wood



Laminate
Linen



Laminate
Maize Walnut
Crossgrain



Laminate
White



Laminate
Mushroom



Laminate
Ocean



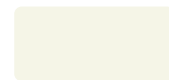
Laminate
Phantom Pearl



Laminate
Putty



Laminate
Madagascar



Laminate
Magnolia

Product Accessories

Hardware Pulls

Handles are usually the finishing touches to the cabinetry when your clients overwhelmed most with the variety of different styles and sizes. Whether the office design carries industrial aesthetics or contemporary, the options being offered are created to fit in your project without overwhelming the interior designers or architects with so many options.



Handle Options:

Steel Bar Handle:

- Brushed Nickel
- Matt Chrome
- Polished Chrome
- Satin Bronzed Copper
- Dark Oil Rubbed Bronze

Bar Handle Details:

Depth	32 mm
Height	12 mm
Material	Steel

Steel Crescent Handle:

- Dark Oil-rubbed Bronze
- Matte Chrome
- Brushed Nickel
- Polished Chrome
- Satin Bronzed Copper

Crescent Handle Details:

Depth	30 mm
Height	10 mm
Material	Steel

Steel D Handle:

- Dark Oil-rubbed Bronze
- Matte Chrome
- Brushed Nickel
- Polished Chrome
- Satin Bronzed Copper

D Handle Details:

Depth	30 mm
Height	8 mm
Material	Steel

Product Accessories

Levelers

These industrial-strength base levelers are designed to screw into the bottom of table legs to create a balanced system while protecting the office floors from scratches.

Base Leveler Details:

Adjustment	17mm Hex Nut
Height	47mm (1 7/8")
Material	Thread: Steel; Foot: Plastic

