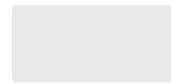


# Rectangular Conference Table

## Finishes & Accessories

### Available Finishes



Textured White  
WH120



Textured Black  
BK59



Gloss Black  
BK266



Gloss White  
WH11



Pastel Green  
RAL 6019



Fern  
RAL6025



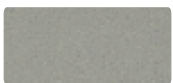
Pastel Blue  
RAL 5024



Salmon Orange  
Ral 2012



Pearl White  
RAL1013



Satin Nickel  
HM512514



Burgundy  
HS212R7



Navy  
HS212B518



Sage  
RAL6021



Turquoise  
RAL6027



Beige Gray  
RAL1019



Melon  
RAL1028



Golden Hour  
RAL1018



Silver Gray  
RAL7001



Violet  
RAL4008



Mauve  
RAL4009

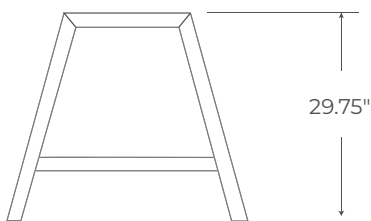


Rose  
RAL3015

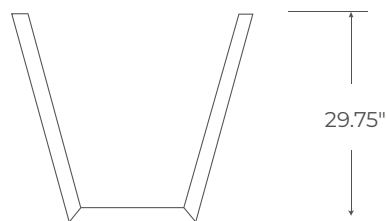


Rust  
RAL8023

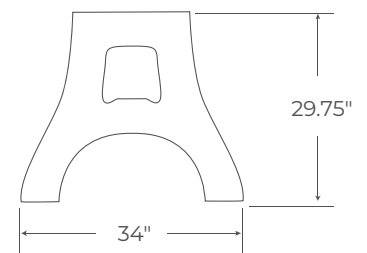
### Frame Base Options



Size options:  
- 34" W  
- 46" W



Size options:  
- 34" W  
- 46" W



Size options:  
- 34" W  
- 46" W

# Rectangular Conference Table

## Finishes & Accessories

### Available Surface Options



Harwood  
Maple



Hardwood  
Oak



Hardwood  
Walnut



Laminate  
5th Avenue Elm



Laminate  
Astro Strandz



Laminate  
Battleship



Laminate  
Beige



Laminate  
Bellini Blue



Laminate  
Black



Laminate  
Buka Bark



Laminate  
Calcutta Marble



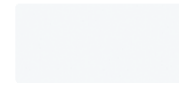
Laminate  
Carbon Mesh



Laminate  
Cement



Laminate  
Charcoal Velvet



Laminate  
Designer White



Laminate  
Florence Walnut



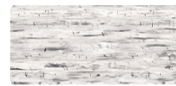
Laminate  
Fusion Maple



Laminate  
High Rise



Laminate  
Island



Laminate  
Lace Gesso Wood



Laminate  
Linen



Laminate  
Maize Walnut  
Crossgrain



Laminate  
White



Laminate  
Mushroom



Laminate  
Ocean



Laminate  
Phantom Pearl



Laminate  
Putty



Laminate  
Regimental Red



Laminate  
Slate Grey



Laminate  
Sprout



Laminate  
Madagascar



Laminate  
Magnolia

## Product Accessories

### Levelers

These industrial-strength base levelers are designed to screw into the bottom of table legs to create a balanced system while protecting the office floors from scratches.

#### Base Leveler Details:

Adjustment	17mm Hex Nut
Height	47mm (1 7/8")
Material	Thread: Steel; Foot: Plastic



### Wire Management

Cable clutter is one of the biggest workplace annoyance. Removing or relocating a cord from a tangled cable batch is one of the toughest jobs. Don't even mention the messy look or the office hazard where you trip over the cords all the time. Formaspace Contract offers hinged covered wiring duct with removable duct covers that attach to desking systems to organize the cable mess underneath and give the offices a cleaner look.

#### Specifications:

- Made of rigid pvc
- Rated for continuous use temperatures up to 50°C (122°F)
- UL94 flammability rating v-0
- Provided with standard mounting holes
- Cover flush with base provides greater wire capacity and improves aesthetics
- Easy cover removal makes changes to wiring quick and easy
- Material: lead-free pvc/ul recognized
- Available colors: black, brown, grey and putty
- Non-slip cover design incorporates integral high friction lining to inhibit cover movement



## Product Accessories

### Grommet Power and Data

We live in an era where the electrical gadgets and USB controlled devices are taking over the office space. Without built-in outlets and inserts, an office desk could be considered naked or not fully functional. Embedding a power unit will complete the desk for end users. It will not only prevent the trip hazard of having exposed, loose cords, it also adds to the aesthetic appeal of the desks.

#### Grommets Details:

##### Standard Grommet

- Colors: Black
- Cut out: 3" diameter

##### Power Dock

- 2 Grounded AC outlet 125V 15A rating
- Colors: Black
- 10 ft. power cord
- UL Certified
- 1000 Joules of surge protection available as an option
- Cut out: 3" diameter

##### Power & USB Dock

- 1 Grounded AC outlet 125V 15A rating
- 2 USB charging ports with shared 4.2A charging power
- Colors: Black
- 10 ft. power cord
- UL Certified
- Cut out: 3" diameter

##### Recessed Dual Power & USB Unit

- 2 power outlets rated 15A/125VAC
- 2 USB charging ports with 2A charging power each, suitable for charging phones and tablets
- Flips back to a blank top in the closed position to conceal the outlets when not in use
- Colors: Black, White, Orange and Chartreuse
- 6 ft. power cord
- UL Certified
- Cut out: 4-1/2" diameter



#### Grommet 3" hole colors:



Black (90)



Walnut Brown (91)



Mahogany (91M)



Light Grey (92)



Navy Grey (92N)



Warm Grey (92W)



Putty (93)



Desert Sand (93D)



Pesan (93P)



White (95)



Metallic Silver (23)