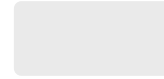


## Finishes & Accessories

### Available Finishes



Textured White  
WH120



Textured Black  
BK59



Gloss Black  
BK266



Mauve  
RAL4009



Rose  
RAL3015



Rust  
RAL8023



Gloss White  
WH11



Pastel Green  
RAL 6019



Fern  
RAL6025



Pastel Blue  
RAL 5024



Salmon Orange  
Ral 2012



Pearl White  
RAL1013



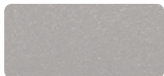
Turquoise  
RAL6027



Beige Gray  
RAL1019



Melon  
RAL1028



Satin Nickel  
HM512514



Burgundy  
HS212R7



Navy  
HS212B518



Sage  
RAL6021



Golden Hour  
RAL1018



Silver Gray  
RAL7001



Violet  
RAL4008

## Finishes & Accessories

### Available Surface Options



Hardwood  
Maple



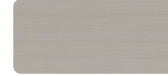
Hardwood  
Oak



Hardwood  
Walnut



Laminate  
5th Avenue Elm



Laminate  
Astro Strandz



Laminate  
Battleship



Laminate  
Beige



Laminate  
Bellini Blue



Laminate  
Black



Laminate  
Regimental Red



Laminate  
Slate Grey



Laminate  
Sprout



Laminate  
Buka Bark



Laminate  
Calcutta Marble



Laminate  
Carbon Mesh



Laminate  
Cement



Laminate  
Charcoal Velvet



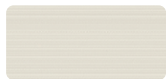
Laminate  
Designer White



Laminate  
Florence Walnut



Laminate  
Fusion Maple



Laminate  
High Rise



Laminate  
Island



Laminate  
Lace Gesso Wood



Laminate  
Linen



Laminate  
Maize Walnut  
Crossgrain



Laminate  
White



Laminate  
Mushroom



Laminate  
Ocean



Laminate  
Phantom Pearl



Laminate  
Putty



Laminate  
Madagascar



Laminate  
Magnolia

## Product Accessories

### Casters

These industrial-strength base levelers are designed to screw into the bottom of table legs to create a balanced system while protecting the office floors from scratches.

#### Base Leveler Details:

Adjustment	17mm Hex Nut
Height	47mm (1 7/8")
Material	Thread: Steel; Foot: Plastic

