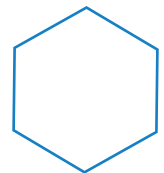
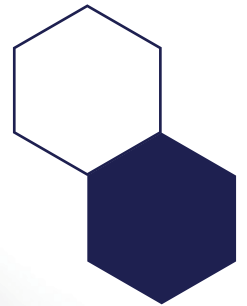


RGX LAB

C A T A L O G



RGX - Lab

Modular Casework Designed for Flexibility

The RGX system revolutionizes casework by offering a truly unique and innovative approach, exceeding the industry standard for **flexibility and adaptability** in workspace solutions. **SEFA compliant** and working towards full certification, RGX ensures peace of mind for even the most demanding applications.



- **Clean Functionality in the Lab:**
The very same RGX construction that delivers inviting aesthetics in hospitality environments transforms to meet the rigorous demands of a laboratory. The easy-to-clean surfaces and durable build ensure the credenza meets the highest standards for cleanliness and functionality, making it a perfect fit for lab applications.
- **Effortless Reconfiguration:**
RGX easily adapts to your evolving needs. Modify or expand your layout with minimal disruption, saving you time and money in the long run.
- **Tailored for Diverse Lab Environments:**
Our standard finishes and work surfaces offer a wide range of options to perfectly suit all lab applications, from blood labs and titration labs to food testing labs, clean rooms, tech labs, and educational facilities.
- **Seamless Integration:**
Integrate RGX seamlessly with your existing furniture, creating a cohesive aesthetic.
- **Quick Installation:**
Reduce downtime with RGX's easy bolt-together system. Its modular design allows for a faster and more efficient installation process, going from weeks to days.
- **Tailored to Your Vision:**
Express your unique design with a variety of work surface and front application options. Choose from steel, phenolic, and HPL/LPL to perfectly match your workplace design.
- **Built-in Functionality:**
RGX doesn't compromise on functionality. It fully supports plumbing and electrical, just like traditional fixed casework.

Benefits



Flexibility to adapt to changing needs



Seamless integration with existing furniture



Depreciates like furniture, not buildings

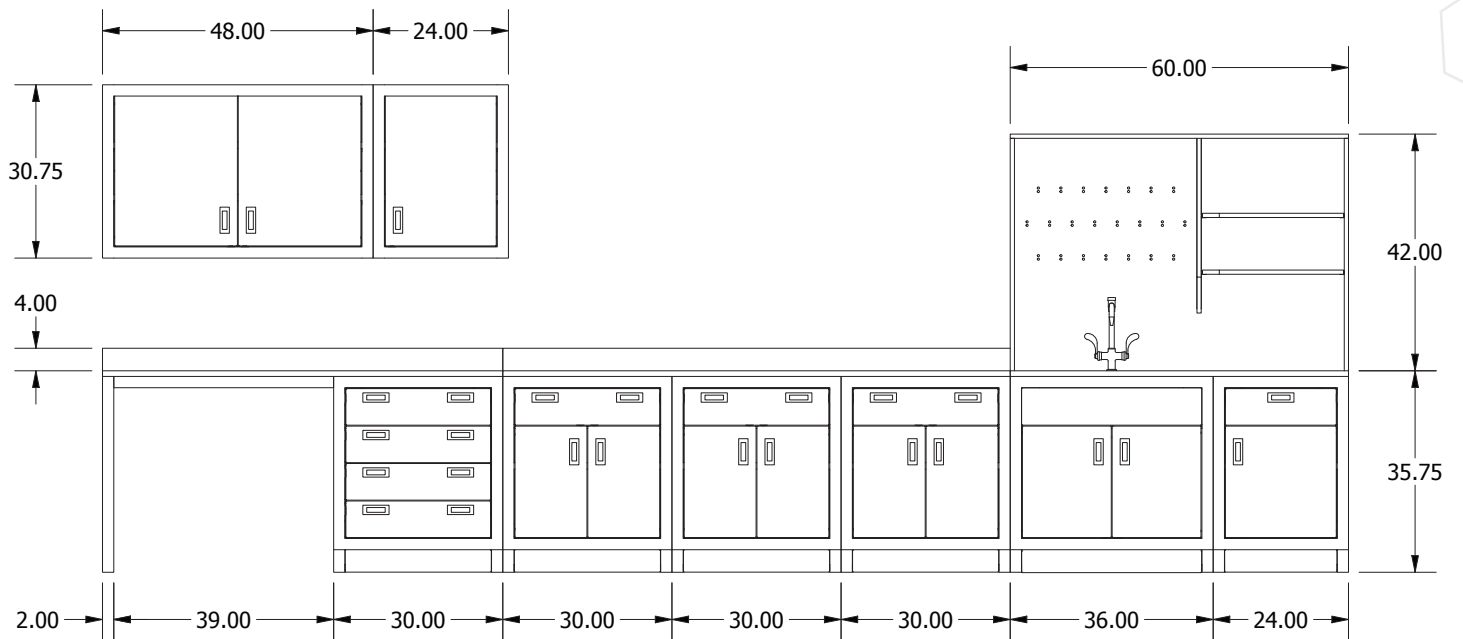
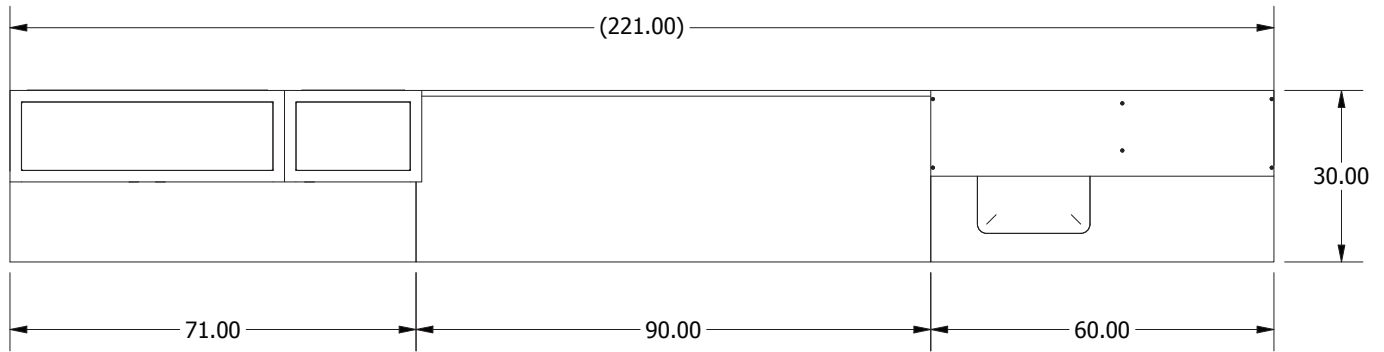


Fast and efficient installation – hours vs days



Designed and built in Austin, TX

Specifications as Seen at Neocon



Surface Options

Phenolic Resin Countertops



Black



Gray



White

Epoxy Resin Countertops



Black

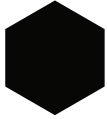


Gray



White

High Pressure Laminate



Black



Gray



White

Stainless Steel Countertops



Stainless Steel



Walnut Heights
7965



Studio Teak
7960



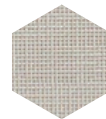
Kensington Maple
10776



Norwegian Ash
8241



Portico Teak
8210



Classic Linen
4943



Frosty White
1573



Dove Grey
D92

Chemical Resistant Countertops

Please note that the comparisons mentioned here were compiled based on product information available from product brochures and manufacturer test results applying different chemicals. Formaspace did not perform any tests under similar conditions to compare the countertops listed below.

	EPOXY RESIN	PHENOLIC RESIN	COLORCORE PHENOLIC	STAINLESS STEEL
LAB APPLICATION	Heavy Duty	Moderate	Moderate	Moderate to Heavy Duty
CORROSIVE CHEMICAL RESISTANCE	High	Moderate	Moderate	Moderate
CARBON-BASED CHEMICAL RESISTANCE	High	Moderate	Moderate	High
TEMPERATURE RESISTANCE	High	Moderate	Moderate to High	High
LEAD TIME	Long	Moderate	Long than Others	Long
MATERIAL	Silica and Resin-Based	Paper and Resin Based	Paper and Resin Based	Stainless Steel
PRICE	●●●●●●●	●●●●●	●●●●●●●	●●●●●●●
SAMPLE ENVIRONMENTS	Chemical, Industrial	Medical, Clinical, Bio-Science	Medical, Clinical, Bio-Science	Food Service, Medical, Clinical

Finishes

Powder Coat Finish Options for Frames and Steel Panels



Accessories

ADA compliant knee panels and base cabinets available.

Fronts Material

Door & drawer fronts are available in powder-coated steel, 0.75" phenolic, or edge-banded laminate. Steel fronts match frame color by default, but custom combinations are possible. CRS (flush pulls only), 0.75" phenolic (wire pulls only), 0.75" lpl (wire pulls only).



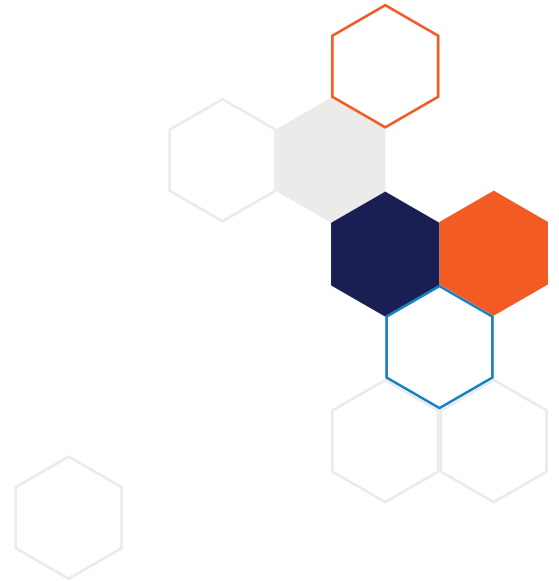
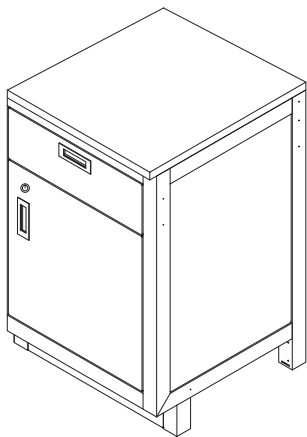
Pulls

Solid machined aluminum wire or flush pulls with 4" nominal width. Available in matte clear or black anodized finish. Wire pulls are standard with phenolic and HPL/LPL fronts. Flush pulls are standard with CRS fronts.




Locks


5-Disc tumbler locks are offered on all RGX models.



 **FORMASPACE**

 800.251.1505

 design.consultant@formaspace.com

 formaspace.com

